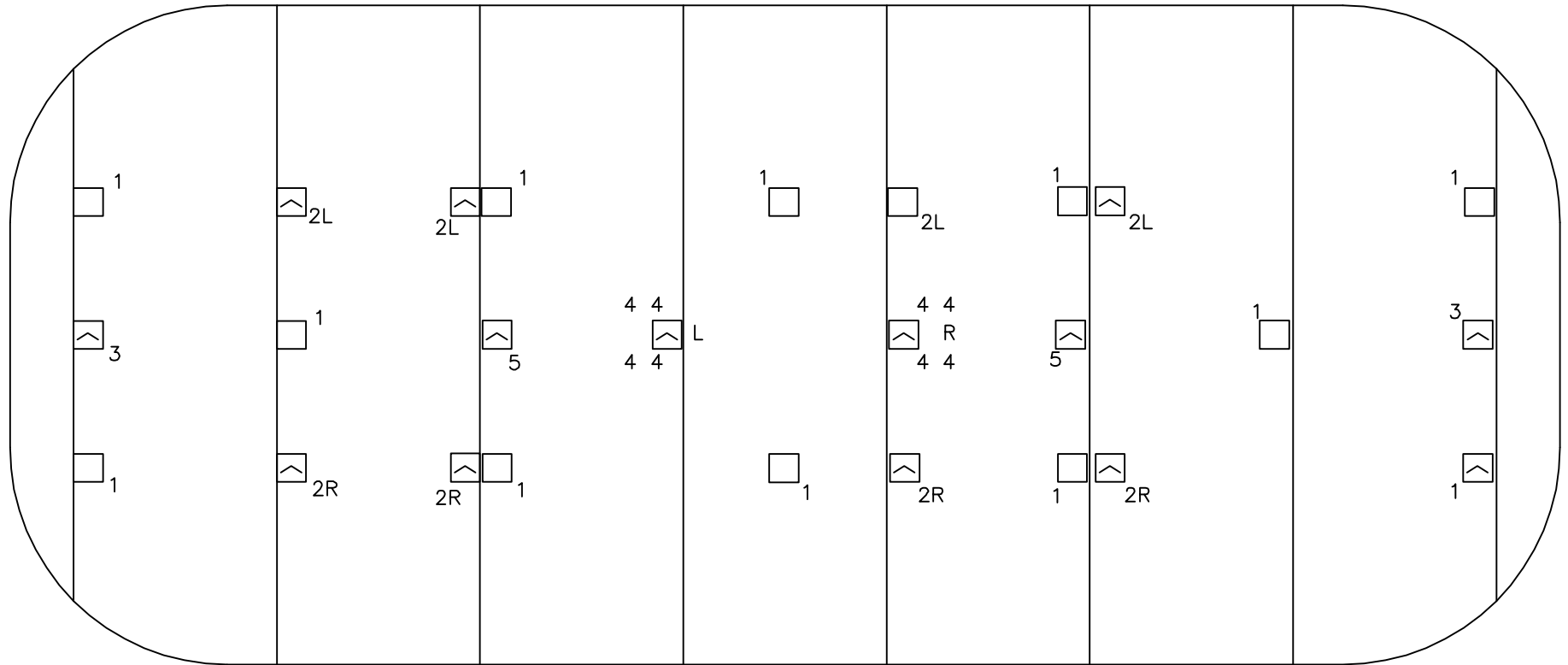


1	•	12.5 AMP	-	INTELLIBEAM
2	•	3 AMP	-	LQ 512
3	•	4 AMP	-	LQ 525
4	•	1 AMP	-	LQ 800
5	•	.5 AMP	-	MBAC 2

- SWITCHED  
 - OPEN

THE SOUND ROOM SHOULD HAVE A MINIMUM OF THREE(3) .20AMP CIRCUITS EACH WITH FOUR(4) OUTLETS. THESE SHOULD BE SEPARATE FROM ANY LIGHTING EQUIPMENT. TWO CIRCUITS SHOULD BE PROVIDE ON THE "ROOF" OF THE SOUND ROOM FOR FOG MACHINE AND LASER EFFECTS.



**ELECTRICAL REQUIREMENTS FOR RINK MOOD LIGHTING**

**Everything Ice™**

www.everything-ice.com  
888-543-0921 814-487-6056